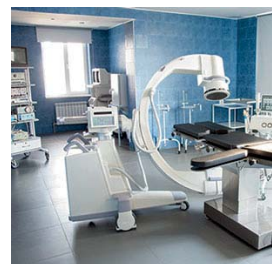
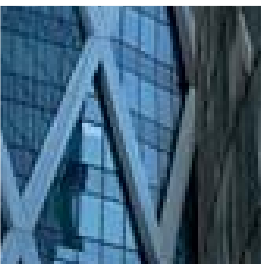
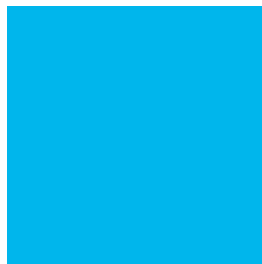
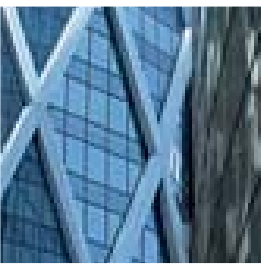
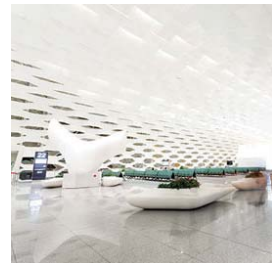




ENVIRONMENTAL  
CLIMATE CONTROL  
EQUIPMENT  
& SOLUTIONS



# TERTIARY SECTOR



[www.ett-hvac.com](http://www.ett-hvac.com)

# Customised energy solutions

## INCREASE PRODUCTIVITY THROUGH AIR HANDLING

ETT is committed to reducing operating costs while ensuring good working conditions whatever the outdoor climate.

### What parameters should you consider?

- Temperature  
Heating or cooling
- Humidity  
Humidification or dehumidification
- Air quality  
Hygienic air-change, filtration, airborne pollutant removal

### Regulatory requirements

The air change rate is subject to local standards usually based on the occupancy rate and the presence of pollutants.

### Tailored solutions and product range

Tertiary buildings (offices, hospitals, retirement homes, hotels, etc.) must comply with the applicable regulations which set out minimum air change requirements.

Our response: ventilation solutions with fresh air modulation.

### Our plus points

#### ETT Syscom

This communication system allows centralised sites monitoring for optimised building management.

■ Room air probe  
■ CO<sub>2</sub> probe

### Energy savings

ETT HVAC solutions allow you to optimise your energy consumption and are eligible for Energy Savings Certificates in some countries.

A comparative study conducted by an independent engineering office between the ETT PACARE unit and a solution associating a heat pump and an AHU showed that, for similar installation costs, the ETT solution allows energy savings of about 9 %.

### ETT solutions and systems' benefits

ETT offers a comprehensive range of thermodynamic air conditioners that operate as reversible heat pumps or in cooling mode only, with or without heat recovery.

#### ETT Services

Our team will guide you every step of the way, from commissioning to operational support.

#### Installation

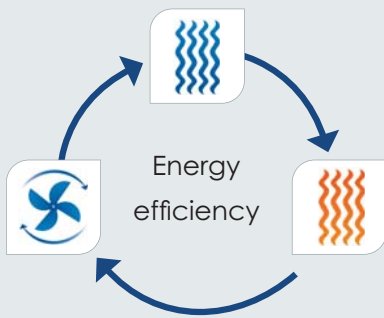
Units may be installed either outdoor (on the rooftop) or indoor (in a technical room) and may be delivered in several blocks.

# Technological solutions

specially adapted to the constraints of tertiary premises

**3** technologies

to address all the challenges



**1** **Cooling**

Air conditioning available when needed.

**2** **Ventilation**

Air flow adapted to occupants' needs thanks to innovative technology.

**3** **Heating**

Energy recovery for optimised consumption.

**Dehumidification**

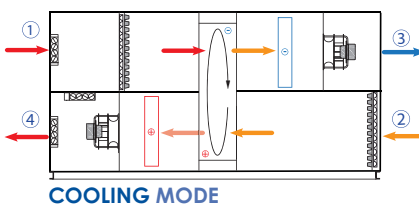
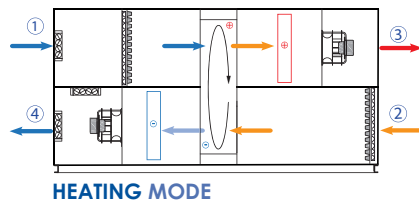
Dehumidification using thermodynamics

## Double flow - All fresh air

### PACARE HPE+

Double flow heat pump with recovery module with rotary exchanger

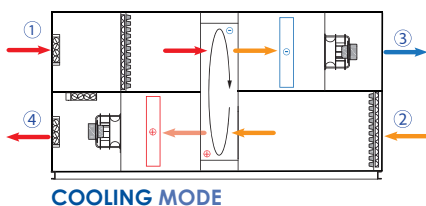
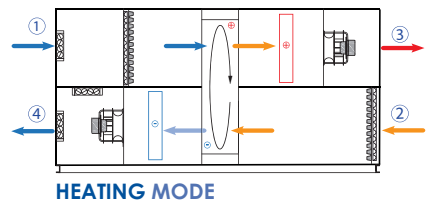
Indoor or outdoor installation



### PACARE // BESPOKE

Double flow heat pump with recovery module

Indoor or outdoor installation

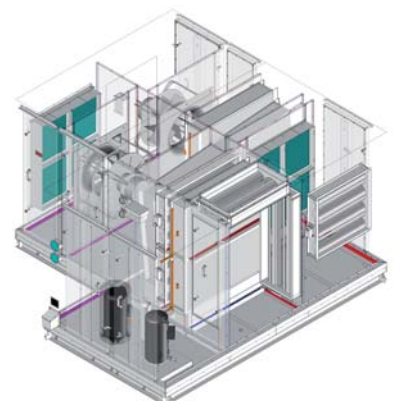
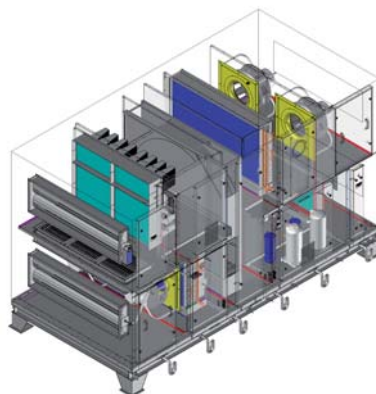


### Ventilation and air conditioning solution for optimum air quality

- Operates as a reversible heat pump, mainly in all fresh air/all exhaust air with supply air temperature control.
- Rotary heat exchanger for energy recovery, complemented by a thermodynamic system.
- Auxiliary heating may be required in some cases.

### Specific tailored solution

- ETT can design bespoke units tailored to meet all the dimensions, transport and access constraints.
- Different types of recovery heat exchangers may be installed: rotary heat exchanger, single pass or 2-pass plate heat exchanger or heat pipe.

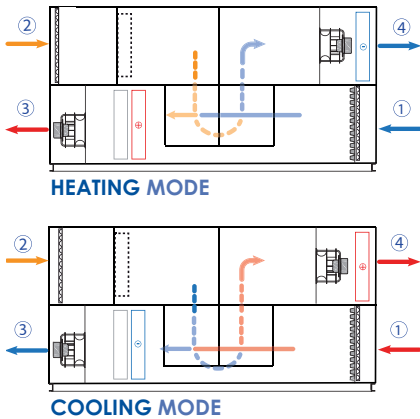




HEOLAIR

**HEOLAIR**

**Double flow heat pump with recovery module with plate exchanger and adiabatic cooling system**  
**Indoor or outdoor installation**



**Ventilation and air conditioning solution for optimum air quality**

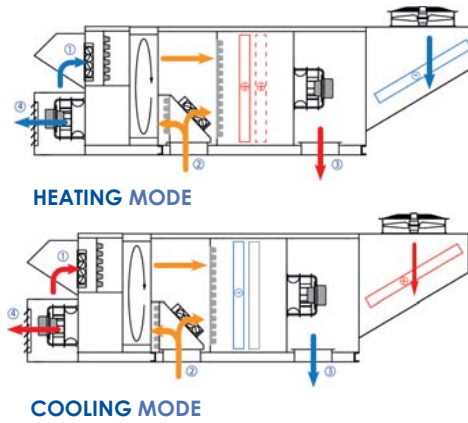
- Operates as a reversible heat pump with an adiabatic cooling system on exhaust air which considerably increases the plate heat exchanger's performance in cooling mode.
- The adiabatic system uses indirect adiabatic cooling without spraying.



Double flow - Recovery

**ULTI+ R32 DX**

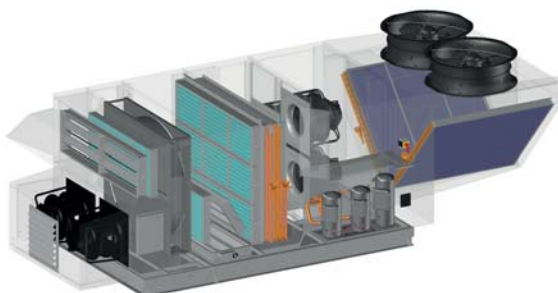
**Heat pump with extraction module and recovery wheel**  
**Outdoor installation**



- 1 FRESH AIR
- 2 RETURN AIR
- 3 SUPPLY AIR
- 4 EXHAUST AIR

**Solution for air extraction and energy recovery**

- Recovery wheel (70% minimum efficiency)
- Fresh air modulation from 20 to 50 % of maximum flow rate
- Separate electrical board
- Standard roof curb



## Your challenges

- **Energy savings**  
Comply with local thermal regulations and apply for Energy Savings Certificates (in some countries).
- **Air renewal**  
Provide sufficient fresh air and evacuate the pollutants.
- **Easy installation**  
Retrofit your installation or add new equipment easily, no installation or adaptation.

## ETT solutions

- **High recovery level** enables significant energy bill reduction.
- **A wide range of flow rates** to cover all fresh air needs.
- **Compact and autonomous units** available in standard or bespoke version.

## ETT, a different climate

Our complete command of the manufacturing process — from design to commercialisation — allows us to offer bespoke and innovative solutions.

As a specialist in air handling systems with energy recovery and high performance heat pumps, we have been guiding our clients towards responsible energy solutions for more than 40 years.



## Customer satisfaction as a core value

- Personalised study of each project
- Constant innovation
- Climatic chamber
- Environmental consideration

ETT is strongly **committed to customer satisfaction**. To this end, we have built up a comprehensive network of professionals to provide every customer with a dedicated contact person according to his project and requirements.

Our extensive experience in the HVAC industry is also bolstered by the expertise and dedication of our teams: **Design Departments, expert consultants, ETT Services network.**



## ETT & ecodesign:

**GREEN DESIGN involves DECONSTRUCTION: ETT units are 98 % recyclable.**

- **Energy:** ETT, innovator in Heat Transfer solutions.
- **Aluminium:** aluminium is endlessly 100 % recyclable.
- **Low polluting ETT manufacturing process:** selective sorting, waste recovery, 60% of waste recycled, no paint on casings, no use of solvent.
- **Consumables: efficient waste management:** ETT units include "ecodesigned" air filters (selective sorting: frame - grille - media)



## ETT Services

▶ **ETT technical support team** is spread **across France and abroad** to share their expertise and offer you the right solution for your application.

### Optimise your energy costs

▶ **ETT Service Contract:** increase the **lifespan of your HVAC equipment**.

### Equipment upgrades:

energy efficiency optimisation, refrigeration circuits restoration, compressors retrofit, communication tools.



▶ **Regular audits:** **maintain a high level of energy efficiency** and keep your operating costs low.

### Train your teams

- ▶ Operation and maintenance training
- ▶ Advanced operational training
- ▶ Custom training

## Guarantee

ETT air handling units are contractually covered by a **guarantee** in France and abroad.

**For metropolitan France, the guarantee covers parts, labour and travel.**

**20-year guarantee against corrosion frame - casing**

## Spare parts

ETT spare parts catalogue is available for download at [www.ett-hvac.com](http://www.ett-hvac.com).

## Conformity

All units are checked and inspected at the factory prior to shipment; a control certificate is issued for each unit.

ETT Quality organisation is certified **ISO 9001:2008** (AFNOR Certificate no. 1994/2016f).



Moreover, each unit is delivered with an **EC certificate of conformity**.

## ETT control and communication

ETT units are controlled through the **ETT SysCom** communication system which ensures **precise and reliable control** of the units for optimised **energy efficiency**.

All ETT units are connected to an ETT SysCom communication system to facilitate unit management through **local or remote communication**.

You can choose to **monitor your consumptions** with:

- ▶ **CCAD:** local communication system for a single unit
- ▶ **PCO Terminal:** local communication system for several units.

▶ **PGD Touch:** local communication system with remote display



▶ **myETTvision:** Remote communication platform (with login credentials)