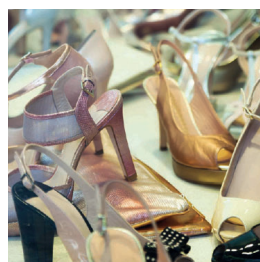
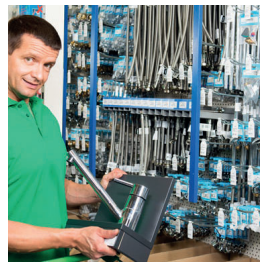
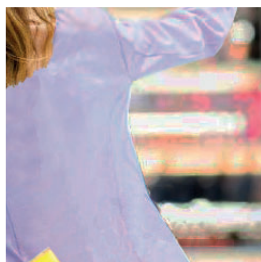
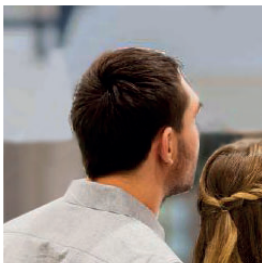
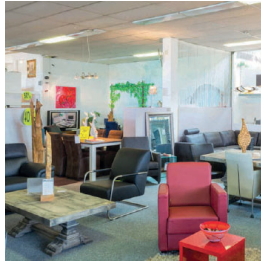




ENVIRONMENTAL
CLIMATE CONTROL
EQUIPMENT
& SOLUTIONS



Retail shops - Boutiques - Specialised stores - Hypermarkets & Supermarkets - Shopping centres

www.ett-hvac.com

Experience

FROM

The universe of sales

ETT, SOLUTIONS FOR COMFORT AND ENERGY EFFICIENCY

We know that commercial buildings consist of several areas intended for different uses and therefore with different needs. That is why we have developed the new ULTIMA GREEN LINE range: modular air conditioning solutions to ensure client comfort and energy efficiency.

Large Food Superstore



Specialised Supermarkets



Commercial Catering



MADE IN FRANCE

100% recyclable aluminium

20-year guarantee against corrosion frame - casing

Large Food Superstore

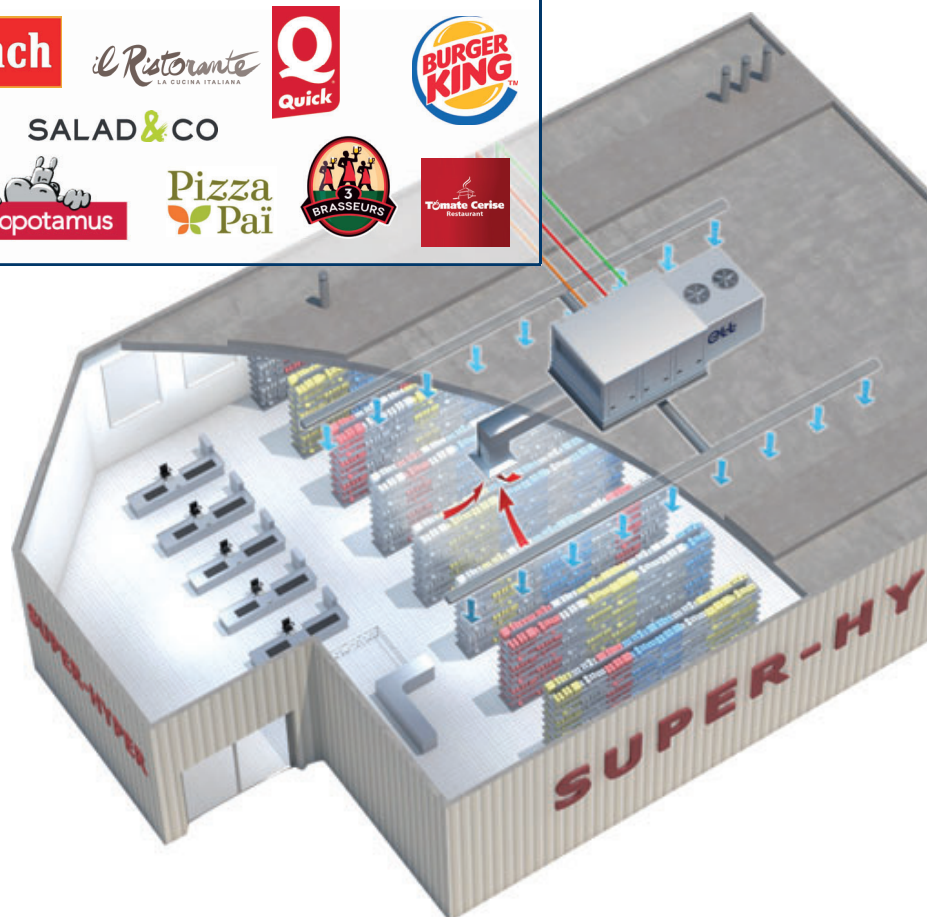
- ▶ + than 5700 units
- ▶ + than 900 units

Specialised Supermarkets

- ▶ + than 6000 units
- ▶ + than 2000 units

Commercial Catering

- ▶ + than 1400 units
- ▶ + than 800 restaurants



The air handling expert for commercial facilities



Energy savings

The ULTIMA range Green Line is an efficient, economical and environmentally friendly solution for buildings heating and air conditioning.

The ULTI+ R32 is designed to offer precise control as well as optimum and continuous energy efficiency during all its operating years.

QUALITY

Premium components and processes

- Sustainable and recyclable equipment: Aluminium frame and bodywork, 100% recyclable, 20-year anti-corrosion guarantee
- Non-polluting process
- Eco-design approach to combine economy and optimum performance (SEER, SCOP)
- Simplified replacement of existing units; identical existing roof curbs
- Reduced units dimensions and weight

R32 refrigerant With low GWP

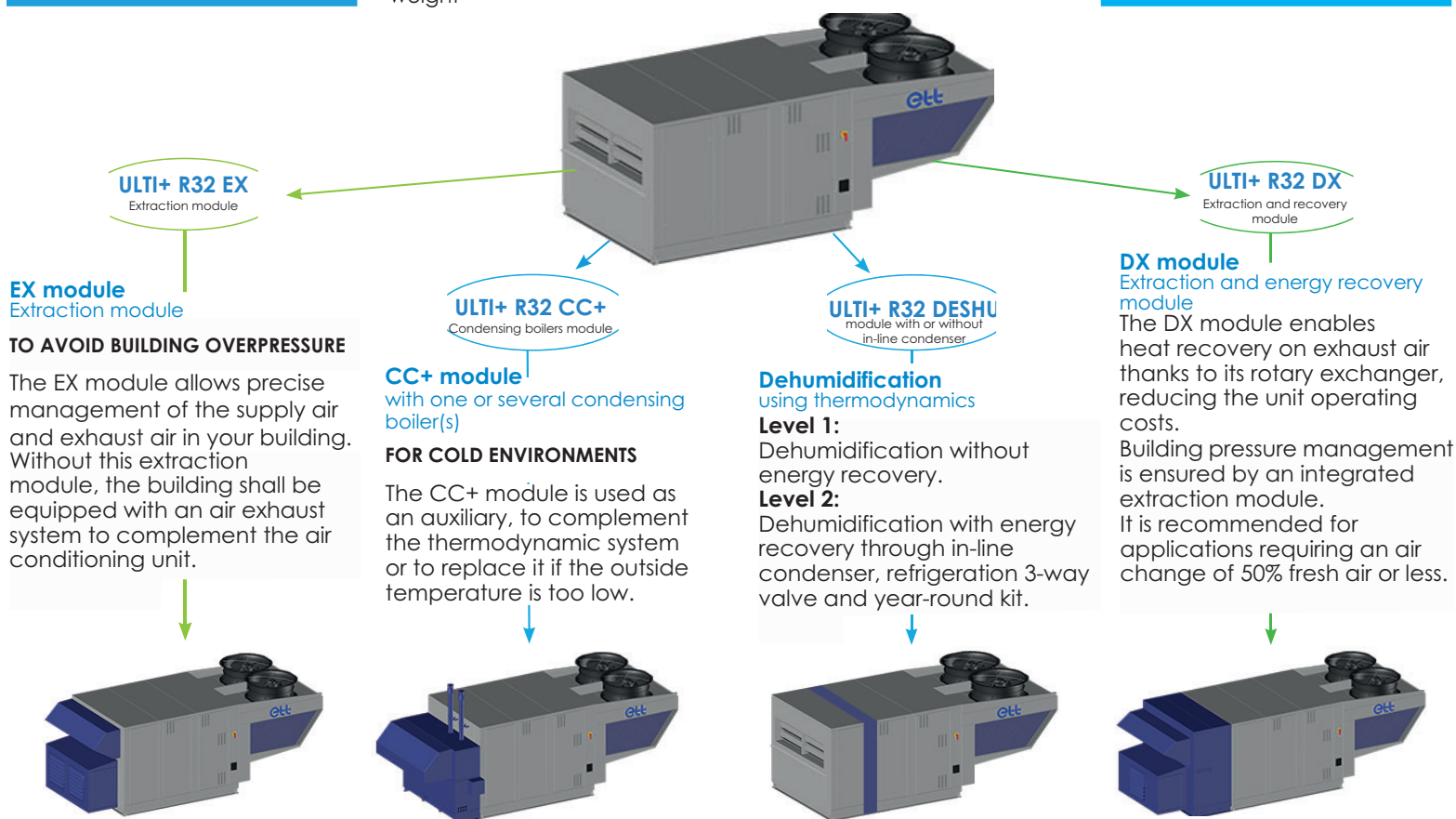


- New ULTIMA Green Line with R32, low GWP (675) fluid.
- Actively participates in the respect of the quota in CO₂ equivalent tonnage, a legal obligation imposed on the gas producer/importer.
- Minimises the impact on the greenhouse effect.



Accessibility & flexibility

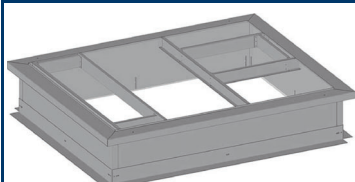
- **Technical compartment** for quick and easy access to the air ducts.
- Free and simplified access to the filters by removable panels.
- Accessible components for maintenance.
- Wide **choice of powers** to adapt to the needs of each project
- **Numerous aeraulic** configurations, responding to integration constraints



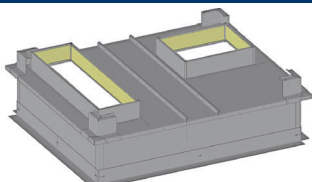
Installation accessories : Roof curbs

One single roofcurb per series 01/11/12/21/22/23

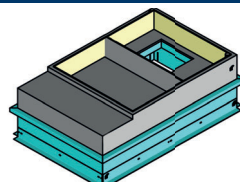
ADJUSTABLE ROOF CURB



ADJUSTABLE VENTILATED ROOF CURB



ADAPTATION ROOF CURB



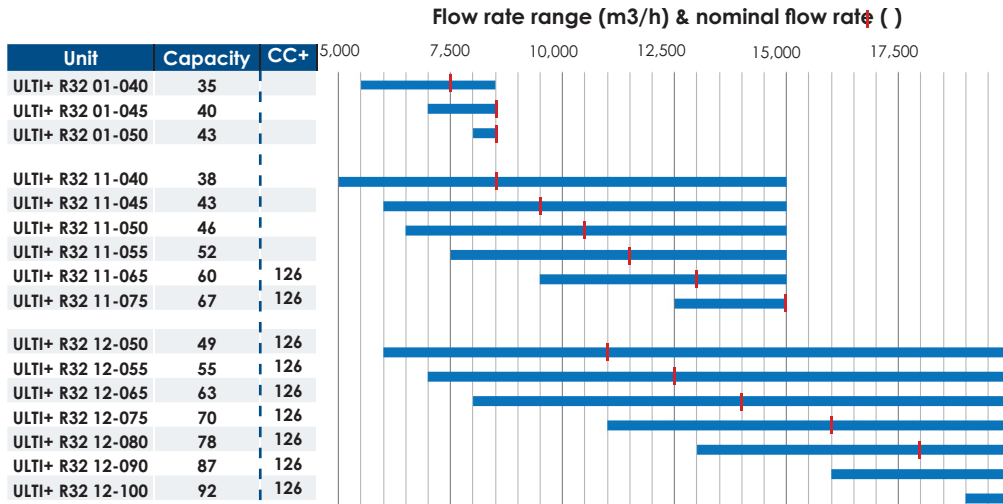
FEETS



INDOOR AIR QUALITY

- ▶ Ecodesign filtration
- ▶ Optimised casing with high performance tightness level
- ▶ CO₂ sensor to control fresh air supply
- ▶ Quick and easy filter replacement.

A WIDE RANGE

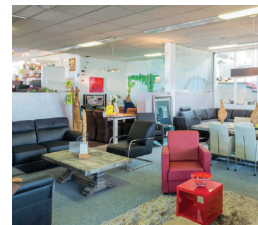
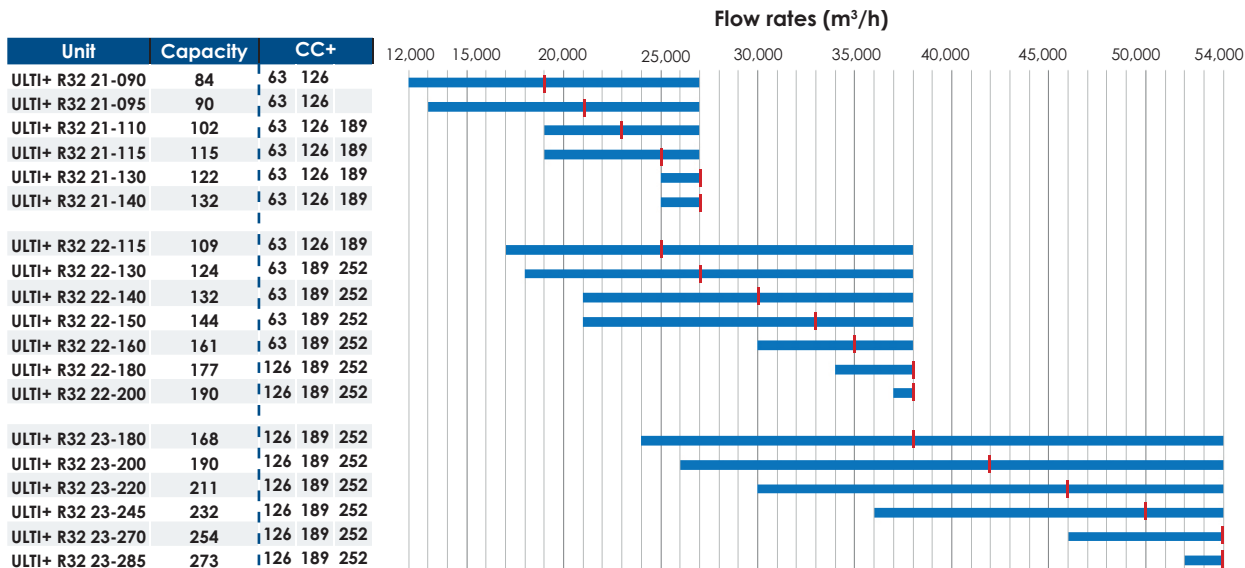


Acoustic performance

MAIN FEATURES

- New generation variable-speed propellers and fans
- Control system adjusting rotation speeds to power stages

Because environmental noise reduction is essential, our standard self-contained units are designed to meet your acoustic requirements.

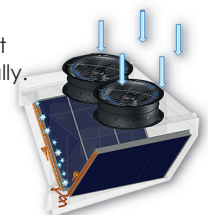


OPTION ULTI + R32 / EX / DX / CC+	Hot water coil or Electric heater in pre-heating or as an auxiliary	
	Dehumidification with heat recovery through in-line con- denser	
OPTIONAL ULTI+ R32	Pressure relief gravity dampers	

Optimised defrosting:

Defrosting principle:

- The condensation of humidity produces frost on the coil.
- The concerned propeller fan stops operating (simultaneous defrosting cycles are banned).
- The refrigeration system 4-way valve reverses: during defrosting, the coil operates as a condenser.
- The coil is dried.
- The other refrigeration circuit continues to operate normally.

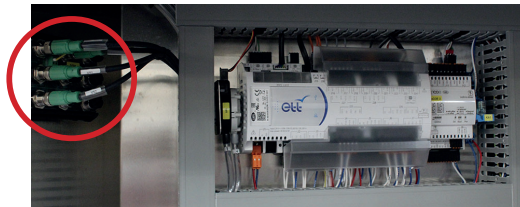


ETT, our expertise for your project

Connected units and components

New Generation PLC

- ▶ Enabling unit communication
- ▶ Sending technical data from the units to an external server to allow optimum remote control with myETTvision



▶ Unit components all connected to a communication bus

Basic integrated PLC with native Modbus RS485.
Modbus IP, BacNet IP, Konnex connection possibilities

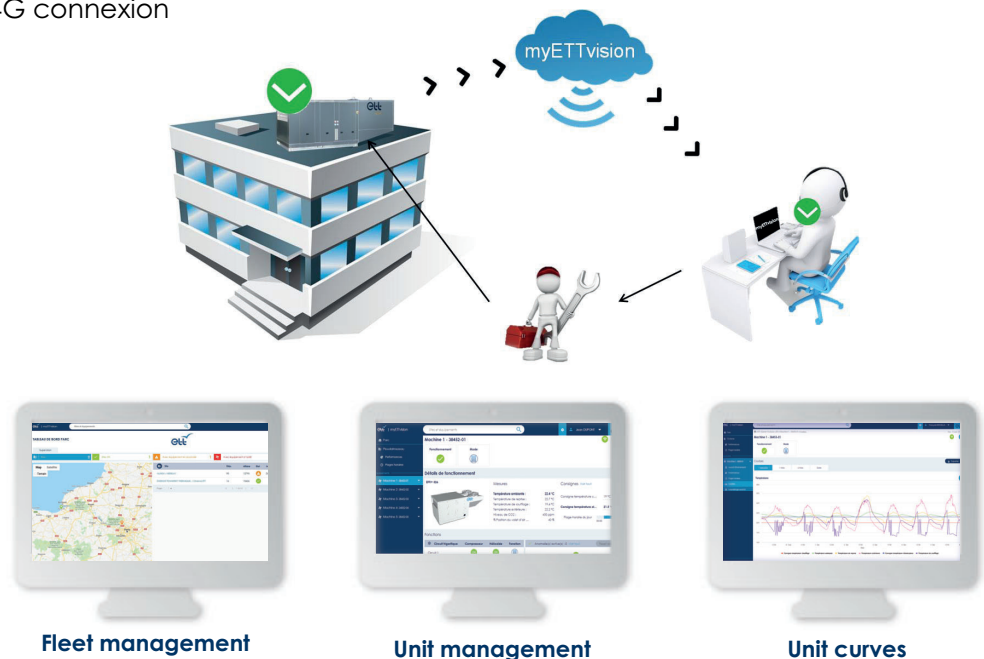


▶ ETT Control Box remote terminal

myETTvision

ETT remote communication platform :

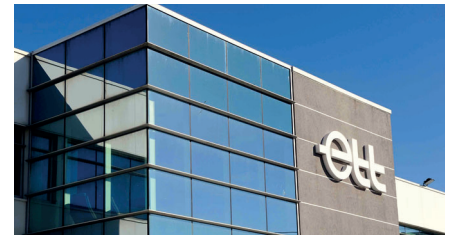
- ✓ Remote access to unit operating data
- ✓ Reach: beyond unit installation site
- ✓ 4G connexion



ETT, a different climate

Our complete command of the manufacturing process — from design to commercialisation — allows us to offer bespoke and innovative solutions.

As a specialist in air handling systems with energy recovery and high performance heat pumps, we have been guiding our clients towards responsible energy solutions for more than 30 years.



Customer satisfaction as a core value

- **Personalised study of each project**
- **Constant innovation**
- **Climatic chamber**
- **Environmental consideration**

Customer satisfaction is a core value for ETT. Therefore, we have established a network of local representatives in order to provide you with a single contact person that fits your needs and your project. Our extensive experience in the HVAC industry is also bolstered by the expertise and dedication of our teams: **Design Departments, expert consultants, ETT Services network.**



Environmental impact:



The Ultima Green Line is eco-responsible and uses R32, a refrigerant with a low environmental impact:

- ✓ Zero ozone depletion (ODP)
- ✓ Global Warming Potential (GWP) of 675

Our technical choices have several impacts on the environment

- Legal and regulatory framework:

- In accordance with Directive 2008/98/EU on waste, clause 26: "The polluter-pays principle is a guiding principle at European and international levels. The waste producer and the waste holder should manage the waste in a way that guarantees a high level of protection of the environment and human health.", ETT is a member of "Ecologic" for France.



- In accordance with articles 5.3, 5.4 and 11 of Regulation (EC) No 303/2008, ETT holds a certificate of capability to handle refrigerants (no. 637).

- Aluminium: a good choice for the planet!
 - Aluminium is endlessly 100% recyclable.
 - Recycling covers over 30% of aluminium needs.
- Consumables: efficient waste management:
 - Filtration: ETT units include "eco-design" air filters (selective sorting: frame - grid - media)

- Low polluting ETT manufacturing process:

- Selective sorting, waste recovery, 80% of waste is recycled.

- No paint on casings, no use of solvent.

- ETT Certifications :

- ISO 14001 Certification : Environmental Management System



- ISO 9001 certification: our Quality organization is the subject of the AFAQ Certificate n° 1994/2016f. Each unit is checked and tested in the factory before delivery and is the subject of an inspection certificate.



- CSR Evaluation: quality of the CSR management system - Corporate Social Responsibility



CE In addition, each unit is delivered with an EC certificate of conformity and complies with the standards listed below:

- Machinery Directive 2006/42/EC - Operator's safety
- Low Voltage Directive (LVD) 2014/35/EU
- Electromagnetic Compatibility (EMC) Directive 2014/30/EU
- Gas Appliances Directive (GAD) 2009/142/EC
- EN 60204-1 - Safety of machinery – Electrical equipment of machines

- EN 378-2: 2017 – Safety and environmental requirements
- Pressure Equipment Directive (PED) 2014/68/EU (sections 2.10, 2.11, 3.4, 5a and 5d of Annex I)
- EcoDesign regulations (EU) 2281/2016 on ErPs

ETT Services

- ▶ **ETT technical support** team is spread **across France and abroad** to share their expertise and offer you the right solution for your application.

To help you reduce your energy costs

- ▶ **ETT Service Contract: increase the lifespan** of your HVAC equipment.
- ▶ **Regular audits: maintain a high level of energy efficiency** and keep your operating costs low.
- ▶ **Equipment upgrades:** energy efficiency optimisation, refrigeration circuits restoration, compressors retrofit, communication tools.



Train your teams

- ▶ Operation and maintenance training
- ▶ Advanced operational training
- ▶ Custom training