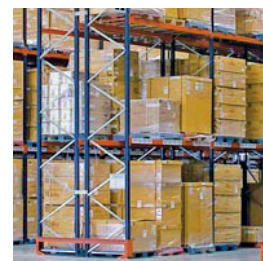
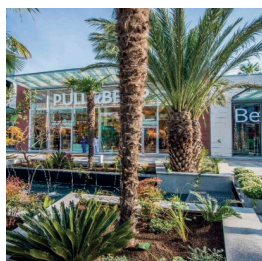
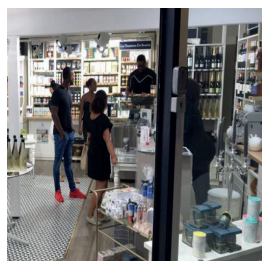
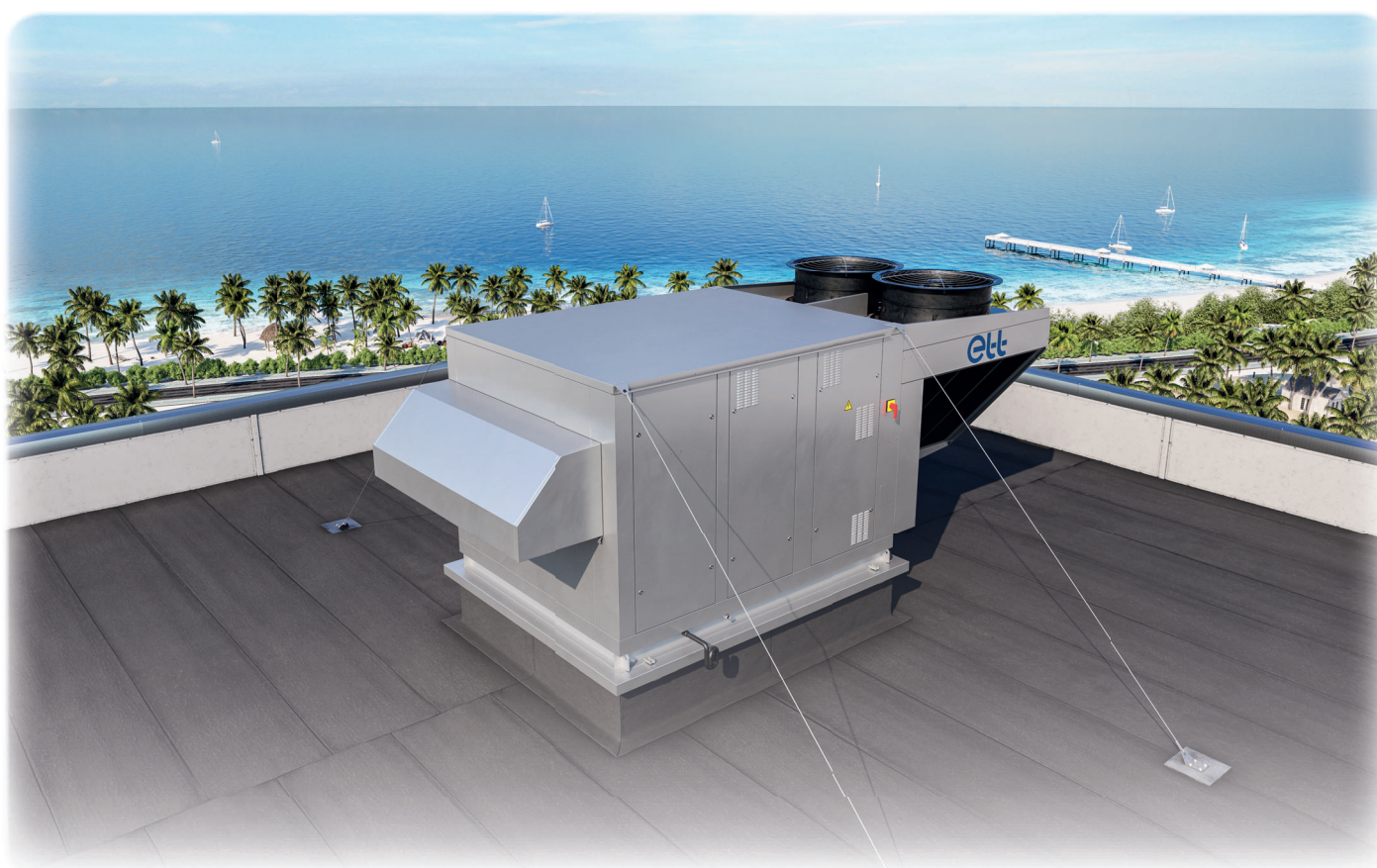




ENVIRONMENTAL
CLIMATE CONTROL
EQUIPMENT & SOLUTIONS



ULTI+ R32 TROPIC



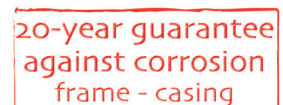
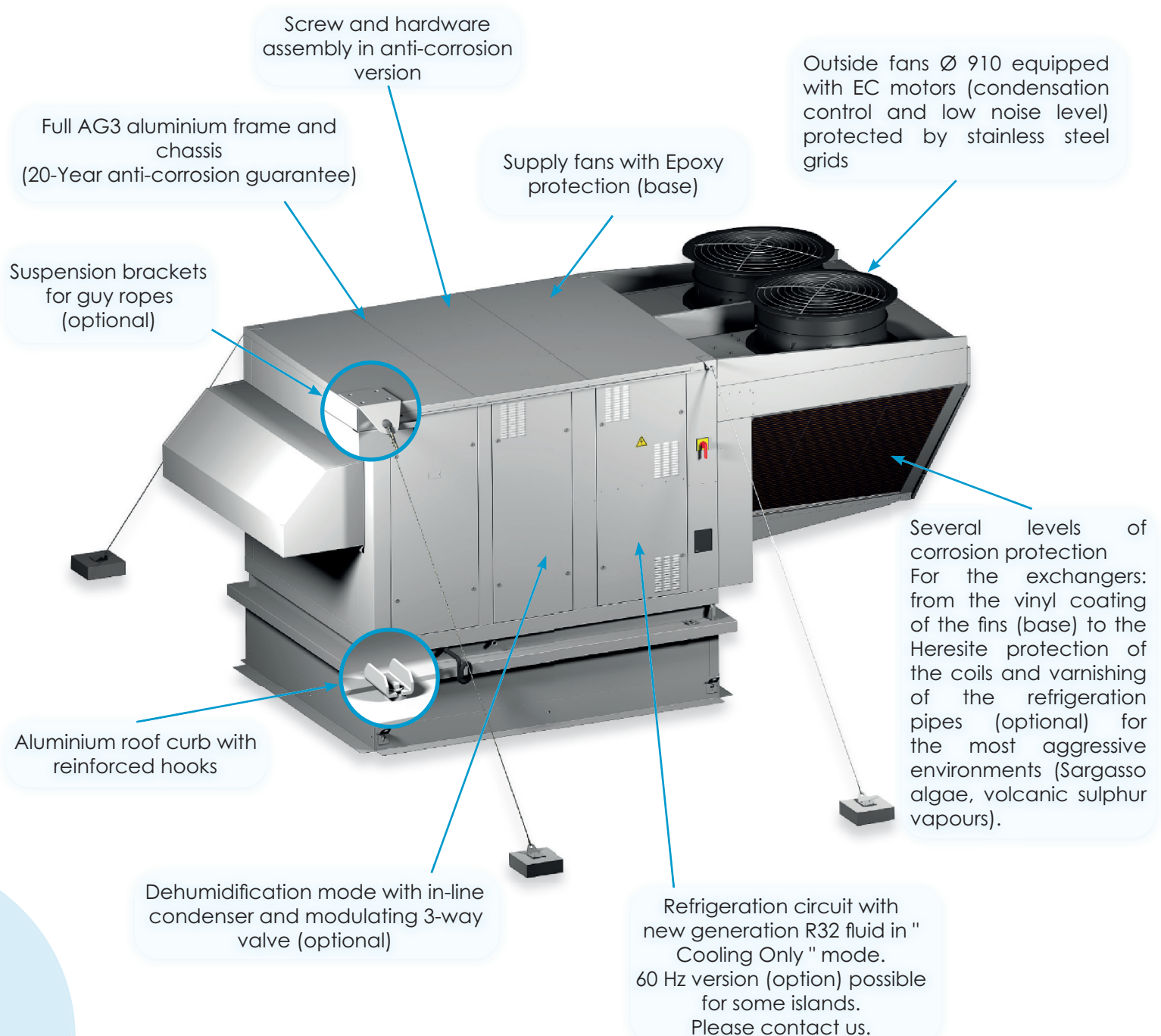
Single flow heat pump for the tropics



www.ett-hvac.com

A unit adapted to its environment

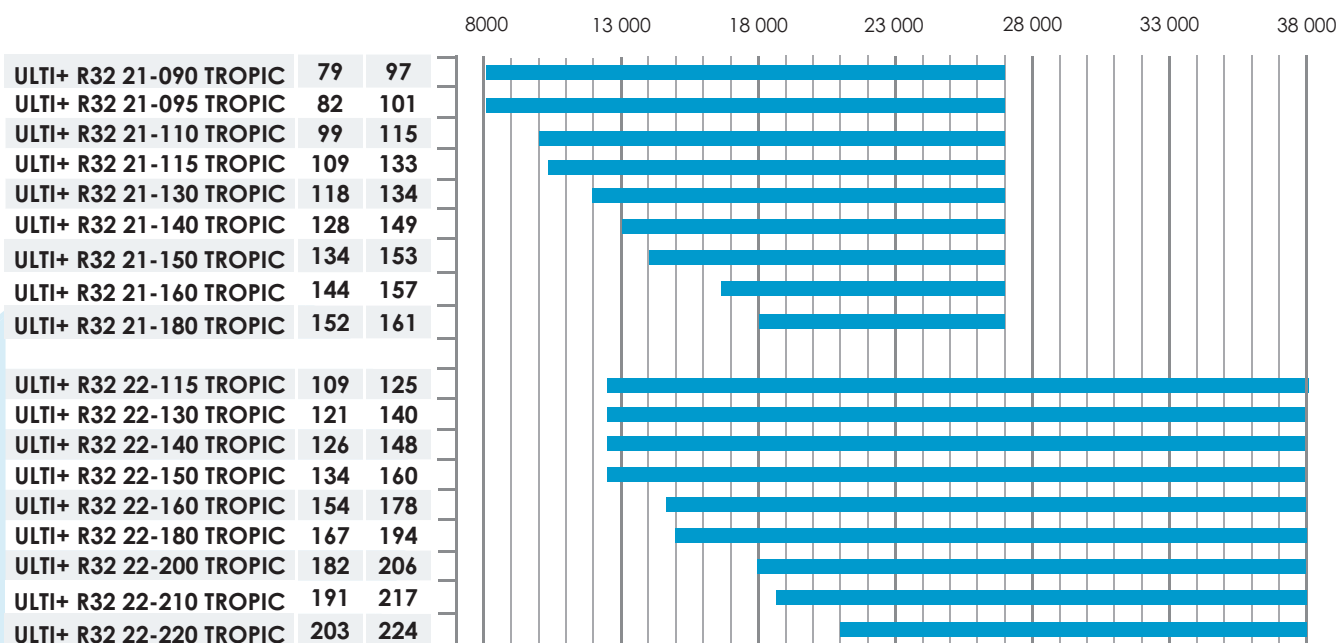
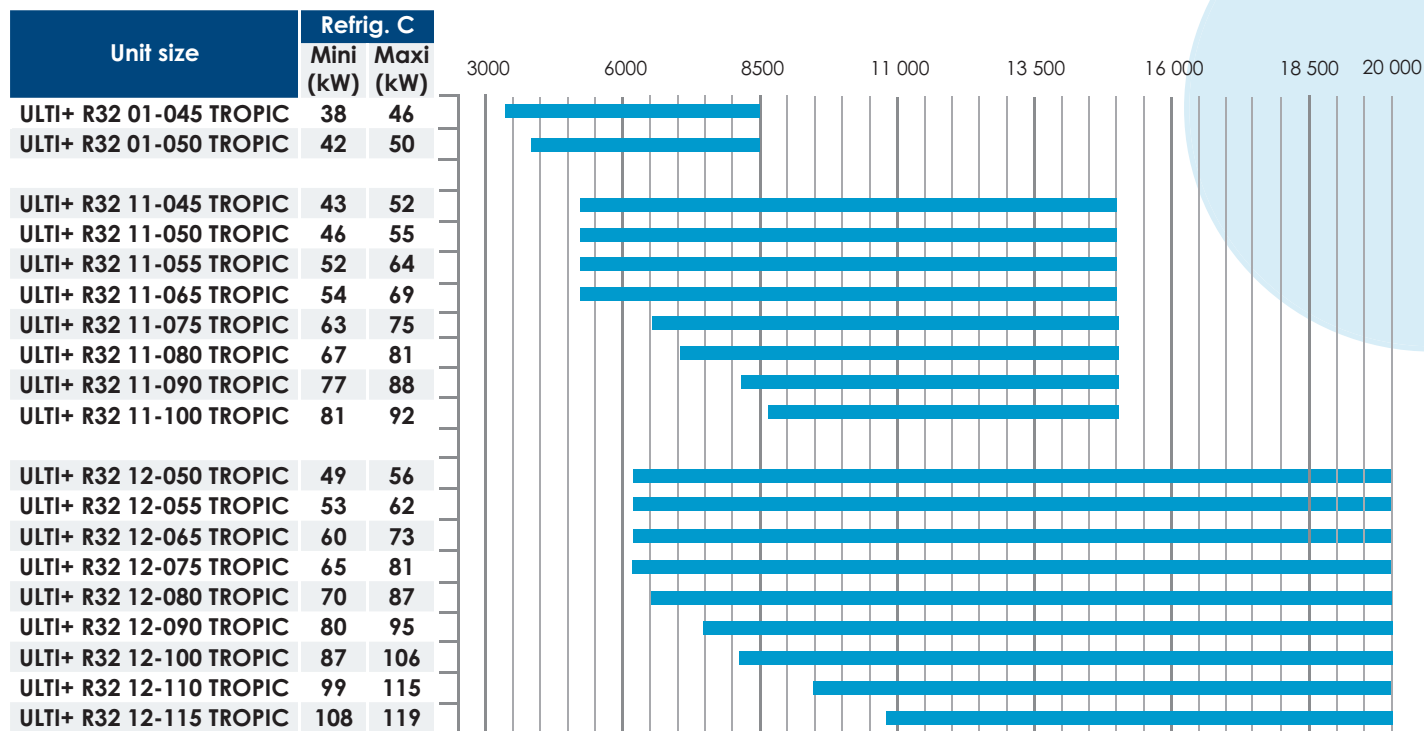
The **ULTI+ R32 TROPIC** is a single flow rooftop specifically designed for tropical areas. Its basic equipment enables it to meet the climatic and energy constraints specific to these regions: corrosion resistance, durability, thermal performance, energy savings.



A wide choice of sizes

The **ULTI+ R32 TROPIC** range has been designed to offer several unit sizes depending on the desired airflow to cooling capacity ratio. Other criteria then come into play in the final choice (noise level, cost, power reserve, body size, etc.).

The refrigeration circuits of each of the units have been sized taking into account the "sensitive/latent" ratio, which is so particular in these regions with high levels of humidity, and allow the usual comfort conditions to be achieved.



Estimated performance for outdoor conditions 32°C / 80%RH - Indoor conditions 26°C / 60%RH - Fresh air rate 20%.

ETT may change equipment technical data without prior notice.
Specifications given in this document are for information only and are not contractual.

ULTI+ R32 TROPIC
MARK- PLA_17-EN_E



A rooftop that knows how to travel

The **ULTI+ R32 TROPIC** machines are intended to transit by sea transport from their place of manufacture (Finistère) to their installation site.



Special care has been taken to facilitate their transport and minimise the risk of damage.

Each unit leaves the factory equipped with a set of removable transport feet to facilitate the passage of the forks for their handling, and protective metal sheets to protect the outside heat exchangers against shocks and collisions.

The **ULTI+ R32 Tropic** in sizes 01 to 12 can be loaded in DRY type containers.

Provide 40ft High Cube containers for size 21 units to allow them to pass overhead without having to dismantle the propeller fans.



ULTI+ R32 Tropic size 22 are to be loaded on a FLAT type container.



ETT delivers its units at the customer's convenience:

- Incoterm " FCA Ploudalmézeau ", units made available at the factory (base)
- Incoterm "Mainland France Freight Forwarder ", machines delivered on flatbed trucks to the customer's forwarding agent (option)
- ETT can ensure the stuffing of the machines in containers transported to its factory (option).



Reference: MARK- PLA-EN_17-ULTI+ R32 TROPIC_E

56 Route de Brest - BP26 - 29830 PLOUDALMEZEAU - France

Tel.: +33 (0)2 98 48 14 22 - Fax +33(0)2 98 48 09 12

Export Contact: +33 (0)2 98 48 00 70 - ETT Services: +33(0)2 98 48 02 22

www.ett-hvac.com

