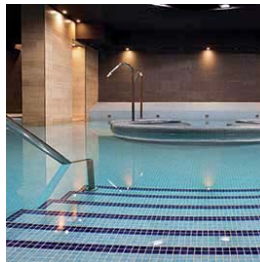




ENVIRONMENTAL  
CLIMATE CONTROL  
EQUIPMENT & SOLUTIONS



# myETTvision

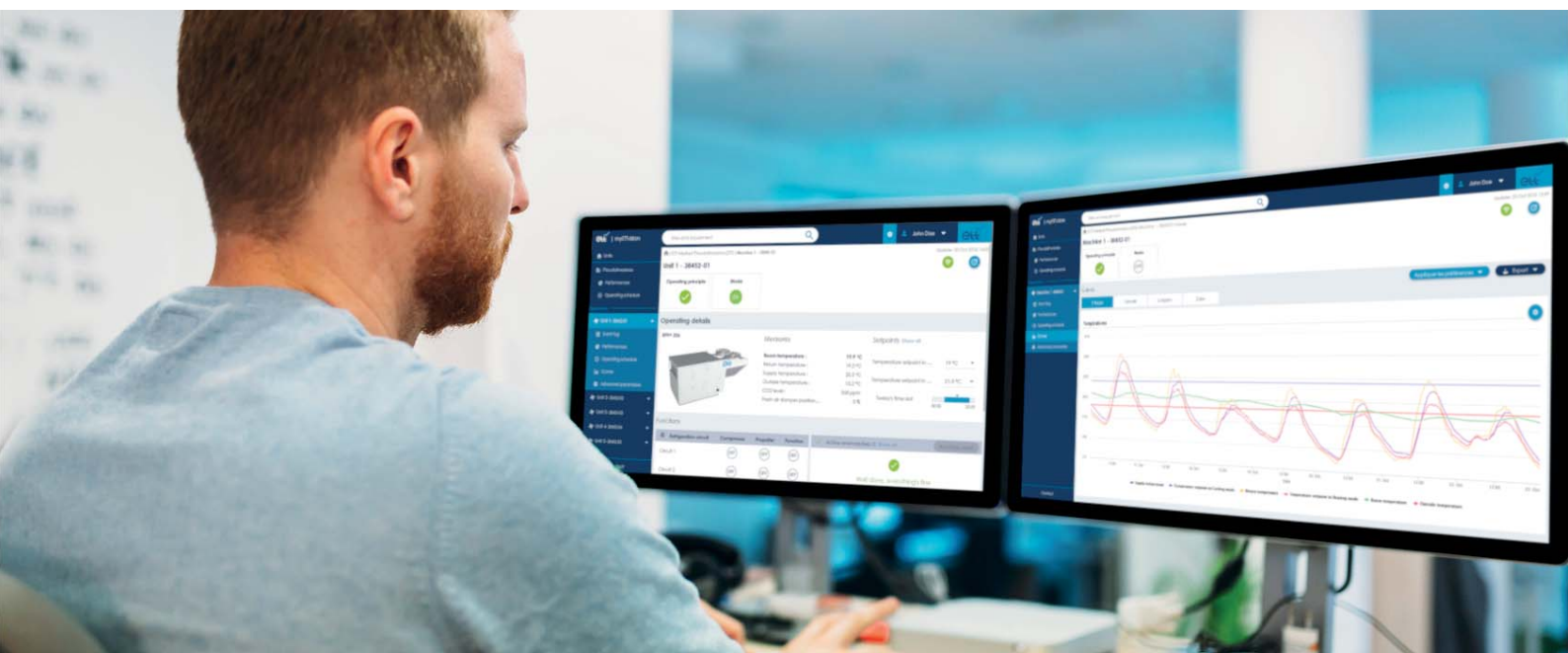
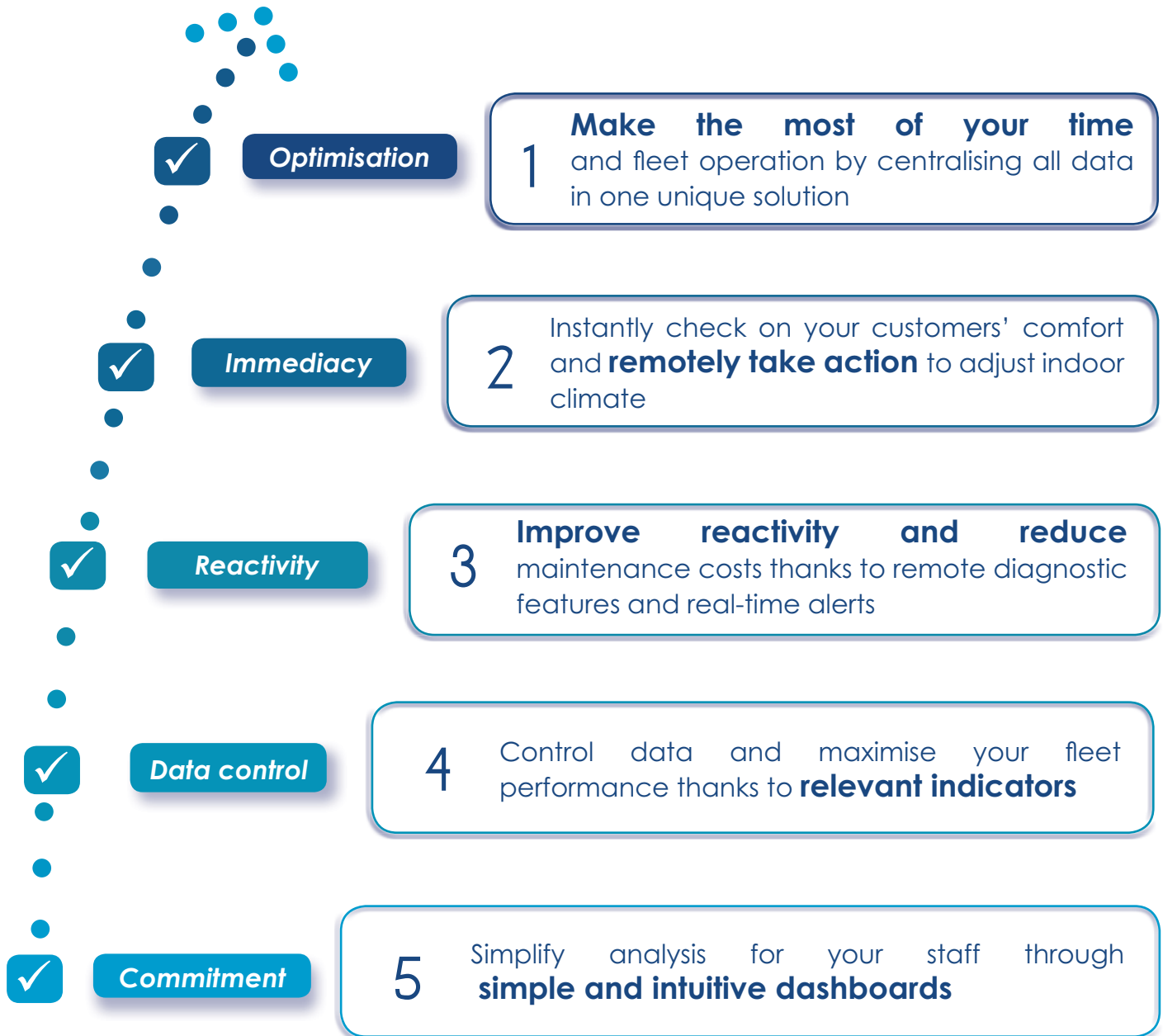


Remote control solution for equipment  
improved performance



[www.myettvision.com](http://www.myettvision.com)

# Top 5 reasons to choose myETTvision



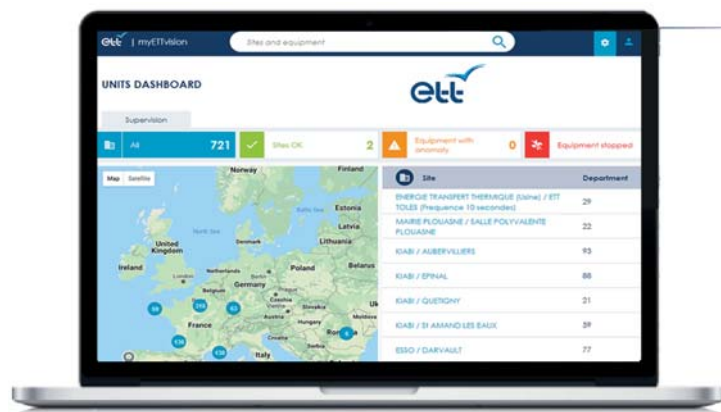
## Fleet management

Enable efficient management thanks to a comprehensive overview and synthetic indicators

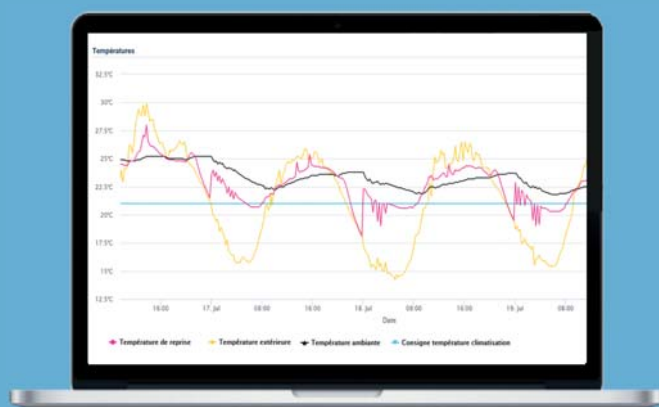
- ✓ Sites geolocated
- ✓ Operating status displayed
- ✓ Diagnostic made easy

### The solution + features

- Sites sorted by status
- Quick access to site and unit via the searchbar



## Indoor climate control



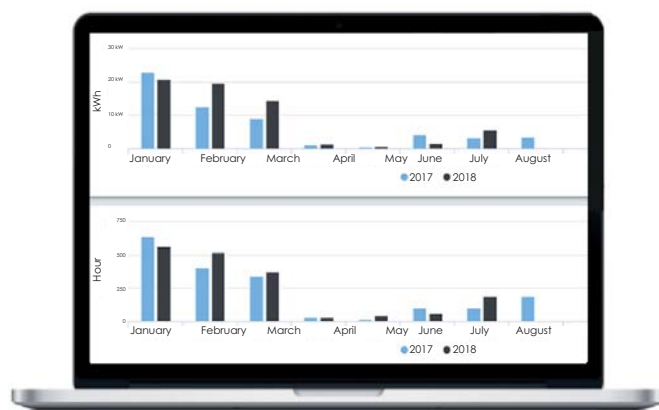
Ensure customer comfort through intuitive features

- ✓ Site readings and setpoints
- ✓ Comparison across units
- ✓ **Annual operating schedule**
- ✓ Data curves and history

## Energy consumption control

Control consumption evolution and act on key levers

- ✓ Access to main settings
- ✓ Display of whole site and individual unit consumptions and operating times
- ✓ Distribution by expenditure item



# **Reactivity** and control over maintenance costs

Real-time information for optimised maintenance and intervention costs

## ✓ **Real-time alerts by email**

- Higher **reactivity** & lower response times
- Higher **equipment availability rate**
- Improved installation **sustainability**

## ✓ Event log

## ✓ Diagnostic and **remote reset of anomalies**

- Saves you two trips per year and per unit
- **Average gain of 400 €/year/unit**

### Example:

#### **Fouled filters alert**

Take action to maintain thermodynamic performance and prevent compressor breakage (cost > 4000 €)

## The benefits of the myETTVision solution



**Suitable for ETHERNET & 3G**



**New router:  
Advanced features**

- ✓ Data backup
- ✓ Automatic time setting of equipment



**Secured data exchange**

- ✓ End-to-end safety with the new router
- ✓ Secured setpoint modifications



**Available in France and Europe**



**Protected personal data**

- ✓ Compliant with the **General Data Protection Regulation (GDPR)** in force since 25 May 2018



**User profile management**

- ✓ Define staff access rights
- ✓ Assign access rights



## **New generation router**

- ✓ Connection status in real time
- ✓ Data backup
- ✓ Automatic time setting of equipment

## **CONTACT US**

To improve **user service quality**  
and **unit performance**



+33 (0)2 98 48 02 22



ett.services@ett-hvac.com

Reference: MARK-PLA\_11\_myETTVision-EN\_A

Route de Brest - BP 26 - 29830 Ploudalmézeau - France  
Tel. +33 (0)2 98 48 14 22 - Fax: +33 (0)2 98 48 09 12  
Export Contact: +33 (0)2 98 48 00 70 - ETT Services: +33(0)2 98 48 02 22

**www.myettvision.com**